



**MODELS LDO33 & LDO50
BELT-DRIVE OR CHAIN-DRIVE
GARAGE DOOR OPENERS**

HOMEOWNER'S INSTRUCTIONS

For Sectional and Jamb Type Doors

IMPORTANT SAFETY NOTES

Please read the instructions carefully! This garage door opener is designed to provide safe and reliable service if installed and tested as described in these instructions. A garage door is the largest mechanical appliance in a residence. Care must be taken to prevent injury or death during installation and operation of the garage door and garage door opener.

THE FOLLOWING FORMATS ARE USED FOR SAFETY NOTES IN THESE INSTRUCTIONS.

WARNING
This type of warning note is used to indicate possible mechanical hazards that may cause serious injuries or death.

CAUTION
This type of warning note is used to indicate the possibility of damage to the garage door or garage door opener.

IMPORTANT USER SAFETY INSTRUCTIONS

WARNING
**A MOVING GARAGE DOOR CAN CAUSE INJURY OR DEATH!
TO REDUCE THE RISK OF DEATH OR SEVERE INJURY:**

- 1 READ AND FOLLOW ALL INSTRUCTIONS.
- 2 NEVER LET CHILDREN OPERATE, OR PLAY WITH DOOR CONTROLS! KEEP REMOTE CONTROL AWAY FROM CHILDREN!
- 3 Always keep moving door in sight and away from people and objects until it is completely closed. NO ONE SHOULD CROSS THE PATH OF THE MOVING DOOR.
- 4 NEVER GO UNDER A STOPPED, PARTIALLY OPEN DOOR.
- 5 Test door opener monthly. The garage door MUST reverse on contact with a 1-1/2 inch object (or a 2x4 board laid flat at the center of the door) on the floor. If adjusting either the force or the limit of travel, re-test the door opener. Failure to adjust the opener properly may cause severe injury or death.
- 6 If possible, use the red emergency release handle only when the door is closed. Use caution when using this release with the door open. Weak or broken springs may cause the door to fall rapidly, causing injury or death.
- 7 KEEP GARAGE DOORS PROPERLY BALANCED. (See Garage Door Opener Maintenance) An improperly balanced door could cause severe injury or death. Have a qualified service person make repairs to cables, spring assembly and other hardware.
- 8 **SAVE THESE INSTRUCTIONS.**

1 Using the Garage Door Opener

Opening the Door

- 1 With the door in view, press the wall station's UP/DOWN ARROW button, the button assigned to the opener on the remote control, or enter a valid access code and press START/STOP on a remote keypad.
- 2 When the opener is activated, the opener's light will turn on and the door will begin to open.
- 3 The door will open until the open limit is reached. If an obstacle is encountered (opener's light flashes four times) while the door is opening, the door will stop.
- 4 The opener's light will stay on for about five minutes after the door stops.

Closing the Door

- 1 With the door in view, press the wall station's UP/DOWN ARROW button or the button assigned to the opener on the remote control, or enter a valid access code and press START/STOP on a remote keypad.
- 2 When the opener is activated, the opener's light will turn on and the door will begin to close.
- 3 The door will close until the close limit is reached. If an obstacle is encountered (opener's light flashes four times), or the safety beam is interrupted (opener's light flashes three times) during closing, the door will stop, then re-open.
- 4 The opener's light will stay on for about five minutes after the door stops.

Stopping the Door Mid-travel

- 1 The door can be stopped immediately at any time by pressing the wall station's UP/DOWN ARROW button, the remote control's pushbutton, or press the START/STOP button on a remote keypad.
- 2 The next time the opener is activated, the door will move in the opposite direction.

Vacation Lock for Additional Security

- 1 Slide the wall station's LOCK switch to the locked position to prevent remote controls from opening the door after the door is completely closed. The remotes can close the door, but not open it. The door can still be opened or closed by using the wall station's UP/DOWN ARROW pushbutton.

NOTE: To signal that the vacation switch is locked, the opener's light will flash five times if a remote is activated in an attempt to open the door.

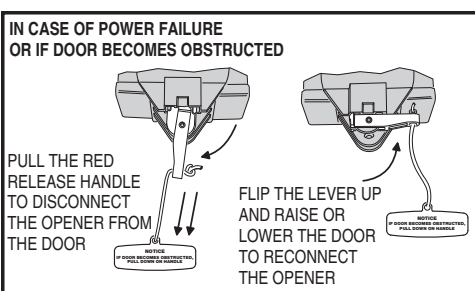
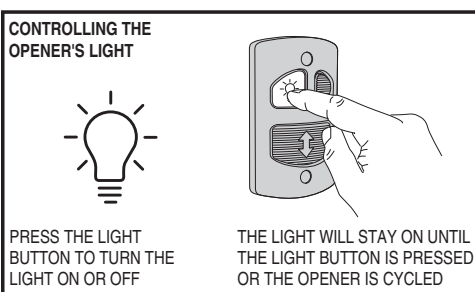
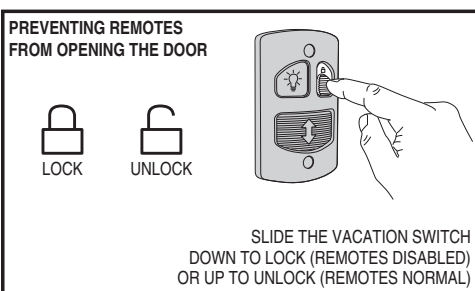
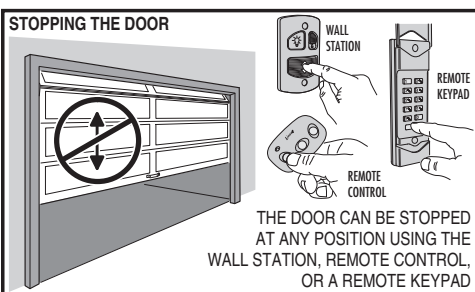
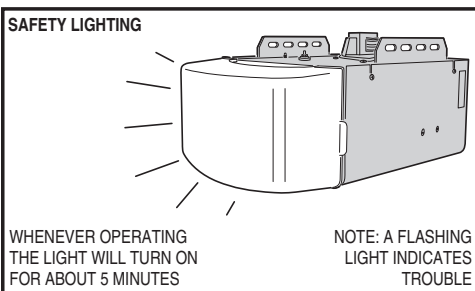
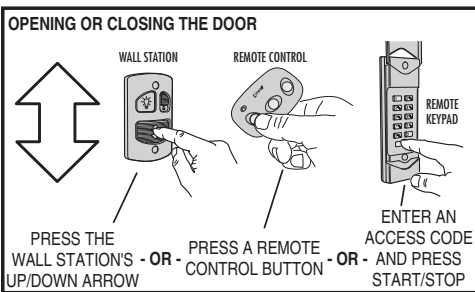
- 2 Slide the wall station's LOCK switch to the unlocked position to return the opener to normal operation.

Controlling the Opener's Light

- 1 The opener's light can be lit by pushing the wall station's LIGHT button. The light will remain on until the LIGHT button is pressed again or the opener is cycled.
- 2 If the opener's light is on, pushing the wall station's LIGHT button will turn the opener's light off.

Disconnecting the Door from the Opener

- 1 With the door in any position (preferably closed), carefully pull the red release handle. **USE CAUTION IF THE DOOR IS OPEN, THE DOOR MAY DROP.**
- 2 The disconnected door can be opened or closed manually.
- 3 To reconnect the opener, flip the release lever up. Raise or lower the door manually until the opener reconnects.



2 Remote Controls

This opener is supplied with a three-button remote control (the second and third buttons can be used to control an additional operator or gate if it contains a Linear MegaCode™ receiver). Additional single and multi-button remote controls can be purchased. An unlimited number of remote controls can be used with this operator. The short wire on the back of the operator serves as an antenna for the remote controls. Do not cut off the white wire or the remote controls will not operate well.

WARNING
Children operating or playing with a garage door opener can injure themselves or others. The garage door could cause serious injury or death. Do not allow children to operate the remote control(s) or the wall station. A moving garage door could injure or kill someone under it. Activate the opener only when the door is clearly visible, free of obstructions and adjusted properly.

To Add a Remote Control

- 1 Press the opener's LEARN button. The red LEARN light will glow. The red light will stay on for about 15 seconds. A remote must be added while the red LEARN light is still on.
- 2 Send a signal from a remote. The red LEARN light and the opener's light will flash once indicating that the opener has accepted the remote.
- 3 Repeat Steps 1 & 2 for any additional remote controls.

To Remove all Remote Controls

- 1 Press and hold the opener's LEARN button for ten seconds or more.
- 2 Release the LEARN button. The red LEARN light will blink three times signaling that all of the remotes in the opener's memory were erased. The red LEARN light will turn off, then turn on for 15 seconds. A remote control can be entered during this time using Step 2 above.

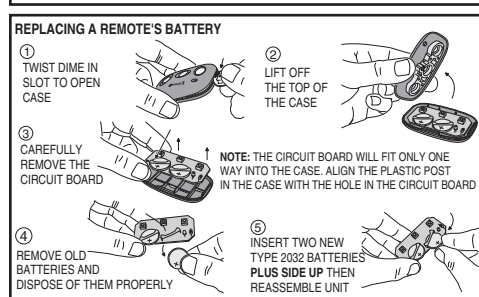
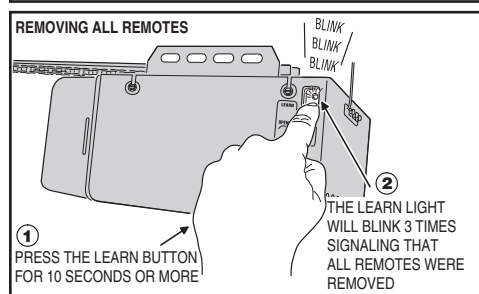
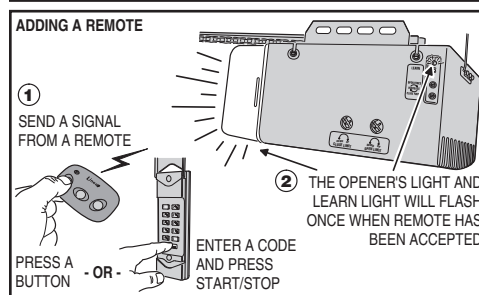
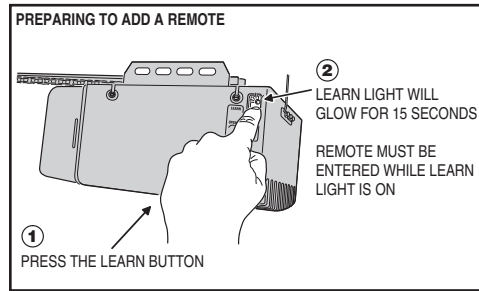
Testing

- 1 Before testing the remote control, straighten out the opener's white antenna wire so it points up.
- 2 Stand clear of the door, press the remote control's button and verify that the opener starts.

Replacing a Remote Control's Batteries

When the red light on the remote glows dimly, or fails to light at all when the remote is activated, the batteries need replacing.

- 1 Open the remote's case and remove the circuit board.
- 2 Replace old batteries with two Type 2032 batteries.
- 3 Re-assemble the remote.



3 Garage Door Opener Maintenance

Weather conditions may affect the door operation which could require some re-setting of the opener's adjustments. Doors may swell and become heavier during wet periods, door hinges and rollers might bind during cold periods. To insure safe operation of the door, perform the following tests, including any additional test steps described.

Every Month

- 1 With the door closed, pull the red release handle to disconnect the opener from the door.
 - 2 From outside the garage, slowly open the door manually all the way, and then close it all the way. Notice if there is any binding, sticking or rubbing. The door should move smoothly in both directions.
 - 3 Raise the garage door about halfway up. Carefully release the door and see if the door balances. It should stay in place. Close the door.
- NOTE:** If the garage door is unbalanced or the door travel isn't smooth, have a qualified garage door professional adjust or repair the door.
- 4 To reconnect the opener, flip the release lever up. Raise the door manually until the opener reconnects.
 - 5 Perform the Safety Beam Test (Section 4).
 - 6 Perform the Safety Reversal System Test as described in Steps 4-6 in Section 6.

After Servicing the Opener

- 1 Perform the Safety Beam Test (Section 4).
- 2 Perform the Open and Close Limit Adjustments (Section 5).
- 3 Perform the entire Door Force Safety System Test (Section 6).

Every 6 Months

- Check the belt or chain tension.
- For belt-drive rails, examine the length of the tension spring in the traveler. It should be about 1" long.
 - For chain-drive rails, examine the spacing between the turnbuckle and the rail. The turnbuckle should be slightly above the rail.

NOTE: Too much or too little chain tension will cause excessive sprocket noise.

Chain Adjustment

If necessary, use the following steps to adjust the chain.

- 1 Hold the turnbuckle with a flat blade screwdriver and loosen the two locknuts with a 7/16" end wrench.
- 2 Twist the turnbuckle to adjust the chain tension. Adjust the chain until the turnbuckle is slightly above the rail.
- 3 Hold the turnbuckle with a flat blade screwdriver and tighten the two locknuts with a 7/16" end wrench.

Belt Adjustment

The tension spring in the traveler keeps the belt taut. The factory setting for the tension spring length is .9" long. If the tension spring is longer than 1", adjust the belt.

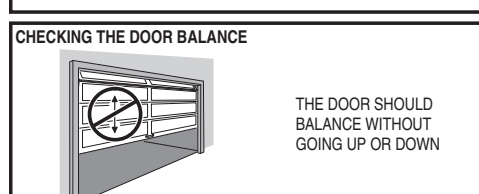
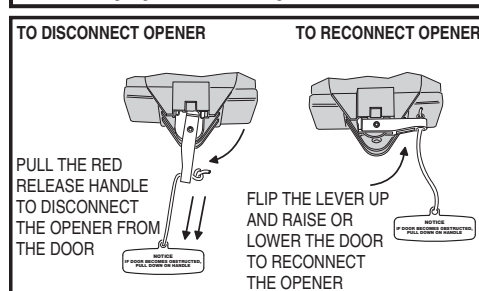
- 1 Hold the traveler so the adjustment wheel is visible through the large slot.
- 2 Use a flat blade screwdriver to turn the adjustment wheel to compress the tension spring until its length is between .9" and 1" long.

Every Year

Check the door hardware for lubrication needs. Lubricate door hinges, rollers and bearings according to door manufacturer's recommended procedures.

WARNING
Garage door hardware (springs, cables, brackets, pulleys, etc.) are under extreme pressure and tension. DO NOT ATTEMPT TO LOOSEN, TIGHTEN OR ADJUST ANY DOOR HARDWARE. CALL A QUALIFIED GARAGE DOOR INSTALLATION PROFESSIONAL!

WARNING
The garage door opener must not be installed and used on an unbalanced door. The opener's internal door force sensor will not function properly on an unbalanced door. Risk of serious injury or death may result.



WARNING
Always perform the entire Door Force Safety System Test (see Section 6) after making any adjustments to the opener.

