

Start the New Year off Right



We're kicking off the New Year with an opportunity for you to earn more money. The *2002 New Year's Check Off* promotion is an easy way to boost your profits on two of our most popular stereo modulators, plus, an opportunity for your sales people to enter a monthly drawing.

For more details call your local sales representative. The promotion runs January 1 - March 31, 2002. Sign up now!

New Pricing Effective January 1, 2002.

If you haven't received a copy of the new ChannelPlus and OpenHouse price lists yet be sure to contact your local sales representative. The new price list includes a few price changes and several new products.

November Winners for 3's Promotion

ChannelPlus is pleased to announce the winners of November's drawing for the **3's promotion**. The following sales people qualified by selling at least \$1,000 during November. Congratulations and keep up the good work!

Western Region:

- \$300** – Kristi Walling-DBL
- \$200**-Alison Chittock-DBL
- \$100**-Dave Garcia-DBL

Central Region:

- \$300** – John Hill- SES
- \$200** – Dave Holdgreve-CTD
- \$100** – Fred Harding-Capitol

Eastern Region:

- \$300** – Tracy Lowe-Key Distribution
- \$200** – Joel Petroff-Key Distribution
- \$100** – Robert Dalson-AAC

Product News

Product Transition Notice:

The 5425 and 5445 are no longer available and have been replaced by the expanded 5525 and 5545.

NEW!

5525 Joins the 5545 in Bringing the Advantages of IR Control to ChannelPlus' Best Selling Modulators.



The 5525 does more, costs the same, and directly replaces the 5425

The 5525 is a two channel mono modulator with an RF output of 25dBmV and integrated IR outputs, bringing

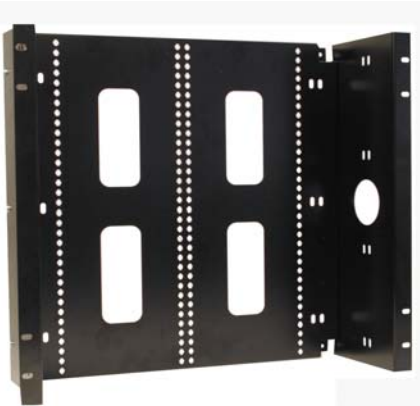
the advantage of IR control to ChannelPlus' best selling modulator line. When combined with a DA-550 series distribution panel, the 5525 will distribute the connected video/ audio sources to eight rooms, providing full IR control over the sources. In addition, the unit has the capability to remotely power the DA-550 from up to 75 feet away. The versatility, compact size, and installer friendly design of make it a perfect fit for any customized home theater installation. Finally, the 5525 delivers the same high tech, excellent quality ChannelPlus is known for, making the 5525 an outstanding market value. IR targets and emitters are sold separately.

5525- Features & Benefits:

- Same size and style
- Performs all functions of the 5425
- Now with 12 & 5-volt IR capability
- 2 Channel mono modulator
- Push button Programming
- Non-volatile memory
- 2 IR emitter jacks
- Can remotely power DA-550 series
- Gold RCA connectors
- Tuning range UHF 14-64 and CATV 65-125
- Compact size 7.9" x 1.5" x 5.5"
- RF output of 25 dBmV

NEW!

ChannelPlus Introduces a Structured Wire Grid for the CEDIA Market.



In stock and shipping now!

The ChannelPlus Model 2619 Rack-mount system is designed for the home theater and custom home markets. Designed with flexibility and ease of use, the new 2619 will allow the integrator to bring the convenience of structured wire to any type of installation using the 19-inch rack system

This new CEDIA style 19-inch rack system is designed for use with the DA series of distribution amplifiers, 8157 residential gateway, and our new line of S-video modulators.

It is an extremely versatile system offering both rack and surface mount versions in one box.

Features & Benefits

- Surface mount
17" X 17.5" X 1"
- Rack mount
19" X 17.5" X 6"
- 12" rack spaces

- 32 Grid inches
- 6 Pass through wire holes

Coming in January



5555BID Bi-Directional 4-Way Distribution Systems

5555 HHR-High Headroom 4-Way Distribution System

Trainings & Tradeshows

Come join us at CES

Booth 23040.

Stop by, say hi, and check out our exciting new products. We will be showing ChannelPlus' new line of 19" rack mountable products including the 2619-Structured Wire Grid, 8157-Residential Gateway, SVM 22/24-S-Video Modulators and introducing the SVC-10 Point-to-Point video distribution system. We will also have on display new products for OpenHouse including a multi-room music system and residential phone system.

CES

January 8-11, Las Vegas
Booth 23040 LVCC

IBS

February 8-11, Atlanta
Booth 453

Factory Training

February 13, 2002* - Brea

*Spaces still available

Training course fee: \$25 per person for the all day course.



Letters to Larry

Dear Larry,

I installed a ChannelPlus 8051 telephone distribution hub and punched down two phone lines on the left side of the 110 strip. It appears that there is no connectivity/continuity between that strip and the RJ45 jacks. I got it working temporarily by punching down the line on the right hand 110 strip, which does have continuity with the RJ45 jacks. However, long term I intend to use the right hand strip as a jumper to additional 8051's. Am I missing something related to the left hand 110 or is the unit defective?

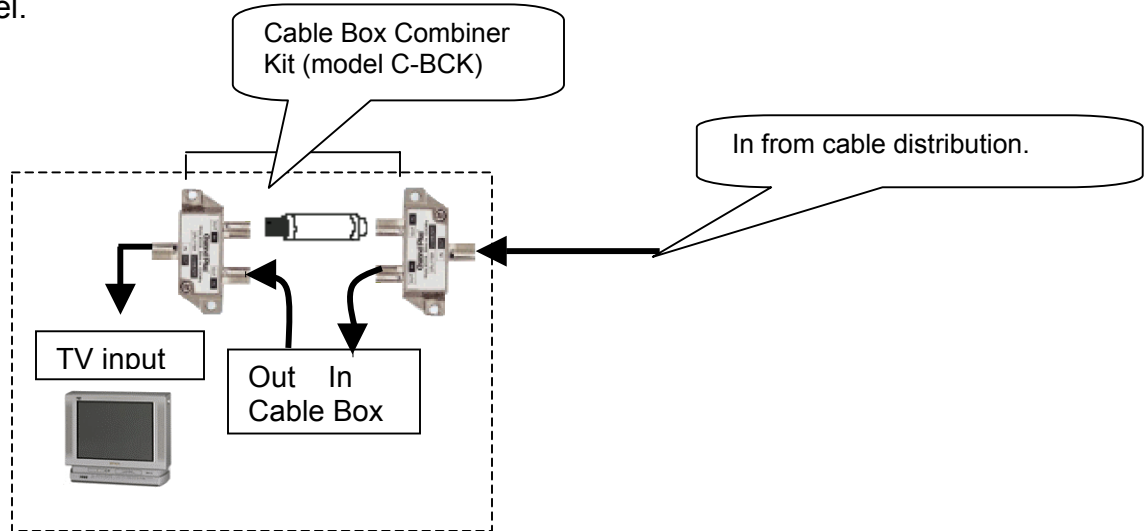
Dear Installer,

Line 1 has an in/out point that can be switched. When the switch on top of the unit is in the bypass (left) position, all connections should be in parallel, that is, you should have continuity between the blue punch-down connections and line 1 connections (pins 4 & 5) of the RJ 45 connectors. The switch has no effect on lines 2-4; they should always have continuity. NOT having continuity may mean that the punch-downs are bad, or the RJ 45 block is bad.

Letters to Larry is taken from actual letters we receive. If you have a technical question, contact us at 800-999-5225 M-F, 8am-5pm or e-mail at info@channelplus.com

Tech tip for using ChannelPlus' Cable Box Combiner Kit by Jack Urrutia

Most of the time a cable box will completely block modulated channels, and therefore must be bypassed in some way. One way to accomplish this is with a ChannelPlus Cable Box Combiner Kit (model c-bck). When installed, the user sets the TV to channel 3 while watching the cable box, but when viewing the modulated channel, the TV needs to be changed from channel 3 to the designated modulated channel.



There is another way to bypass the cable box, if both the cable box and the TV have Audio/Video (RCA) connections. You can split the cable feed with a 2-way splitter, and connect one output directly to the TV and one directly the cable box. Then use Audio/Video cables to connect the cable box to the TV. While watching the cable box, the TV will be set to its video input, but when the modulated signals are viewed the TV will be set to its regular coax input and tuned to the designated channel.

